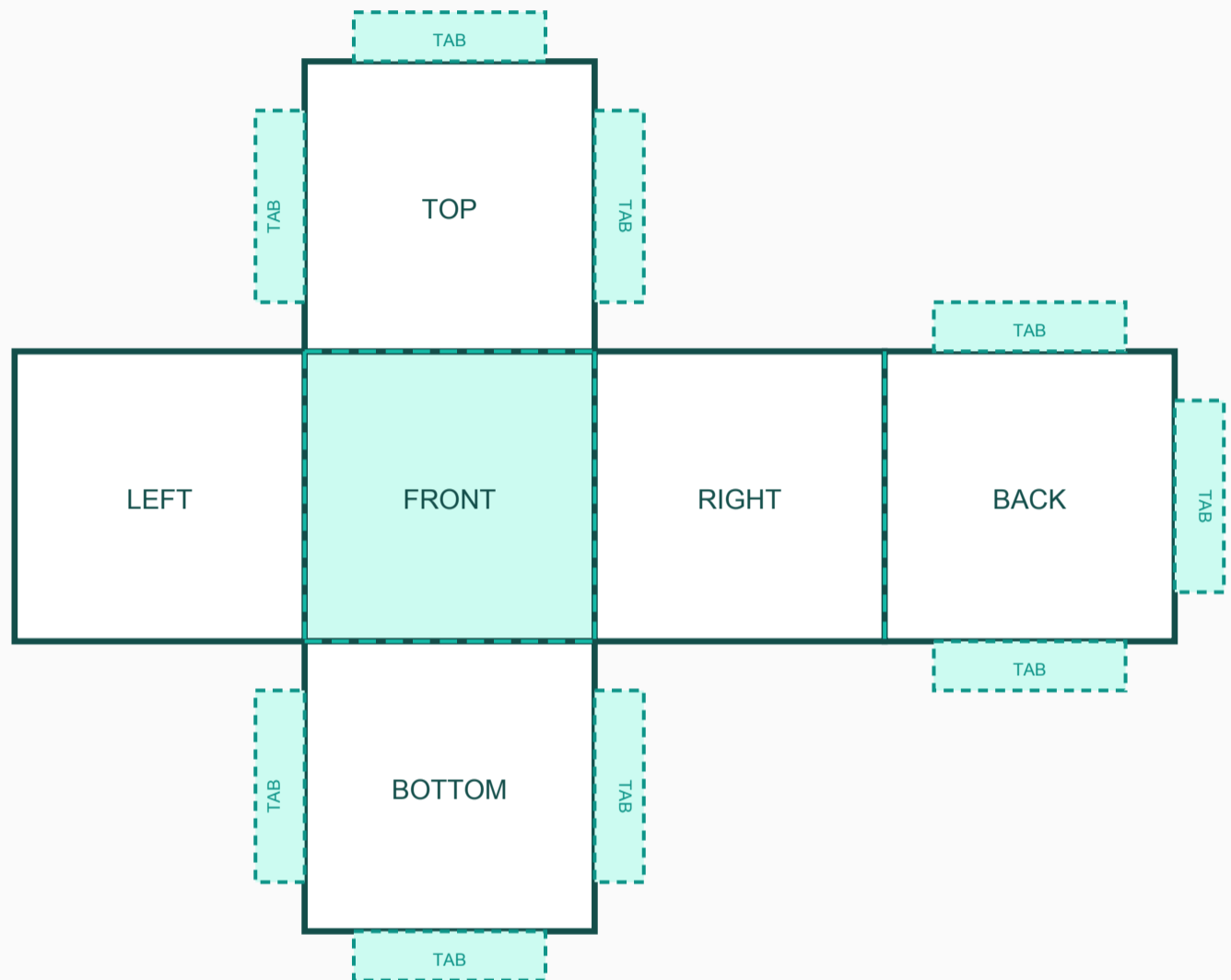

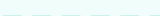



# Box Net (Die-Cut Template)

Cut on solid lines · Score and fold on dashed lines · Glue the shaded tabs



## Legend

-  Cut line — cut along these edges with scissors or craft knife
-  Fold line — score with bone folder then fold toward you
-  Glue tab — apply glue to this face and press to adjacent panel

Print at 100% on card stock (160–250 gsm). Score fold lines before folding for clean edges.